

Chorley Partnership Board

Thursday, 3 March 2011

Present: Allan Jones (Chair) and Councillor Eric Bell (Chorley Council), Councillor Alistair Bradley (Chorley Council), Councillor Pat Case (Chorley Council/Lancashire County Council), Councillor Peter Goldsworthy (Chorley Council), Geraldine Moore (Age Concern Lancashire), Lincoln Shields (Business Consultant), Gwynne Furlong (Chorley Chamber of Trade), Reverend Andrew Mashiter (Chorley Churches Together), Diane Gradwell (Citizens Advice Bureau), Jeannie Stirling (Homestart), Mary Kiddy (Associate Director (Public Health), NHS Central Lancashire), Paul Wainwright (Stagecoach in Lancashire) and Sarah Palmer (Lancashire County Council District Partnership Officer)

Also in attendance:

Officers: Sarah James (Partnerships Manager), Louise Wingfield (Partnerships Assistant) and Chris Sinnott (Head of Policy)

11.CPB.86 WELCOME BY THE CHAIR

Allan Jones welcomed everyone to the last meeting of the Chorley Partnership Board.

11.CPB.87 APOLOGIES FOR ABSENCE

Apologies were received from Donna Hall (Chorley Council), Jan Ledward (NHS Central Lancashire), Richard Houghton (Chorley Community Housing), County Cllr Mark Perks (Lancashire County Council), Cllr John Walker (Chorley Council), Temporary Superintendant Coulston-Hermann (Lancashire Constabulary), Temporary Chief Inspector Richard Robertshaw (Lancashire Constabulary), John Buck (Lancashire Fire and Rescue), Cindy Bolton (Chorley & South Ribble CVS), Reverend Martin Cox (St Laurence's Church), Terry Dickenson (Chorley Sports Forum) and Cllr Peter Malpas (Chorley Council).

11.CPB.88 MINUTES OF THE PREVIOUS MEETING 2ND DECEMBER 2010

The minutes of the previous meeting were confirmed as a correct record.

There were no matters arising.

11.CPB.89 CHORLEY PARTNERSHIP PERFORMANCE REPORT QUARTER 3

Chris Sinnott gave an overview of the Chorley Partnership Quarter 3 performance report.

The report highlighted that:

- overall crime had reduced by 3.8% compared to this period last year.
- the number of new business established is on target and performing well with 51 businesses established against a target of 39.
- Unemployment has remained constant at 2.3% at the end of September to the end of December. The Chorley claimant count remains below the Lancashire and North West average.

The report also includes an update on progress made in the delivery of the key projects that have been commissioned by the Chorley Partnership in 2010/11. Performance is excellent, with all of the projects currently rated 'green'.

11.CPB.90 CHORLEY PARTNERSHIP - OUR ACHIEVEMENTS SO FAR

Chris Sinnott gave a presentation to celebrate the achievements of the Partnership, and the impact we have had so far by working together for the residents of Chorley, focusing on the three years since our last review in 2007.

Sarah James and Jenny Broom (Healthy Lifestyles Advisor, NHS Central Lancashire) gave a presentation on a specific achievement – the Alcohol Intervention Programme and One Stop Health Shop.

The Chair of the Executive, Cllr Goldsworthy, presented Reverend Andrew Mashiter with a Chorley Smile Award for services to the Partnership in his role as Chair of the Stronger More Involved Communities Group and representation of the faith sector. Reverend Mashiter will be stepping down from his role on the Chorley Partnership from April.

11.CPB.91 CHORLEY PARTNERSHIP - LOOKING TO THE FUTURE

Sarah James gave a presentation on the new arrangements for the Partnership from April 2011, to consider how these help us to build on our previous achievements and to deliver the requirements of our new Sustainable Community Strategy.

Geraldine Moore made a contribution in terms of the future role of the voluntary, community and faith sector in the new structure.

11.CPB.92 ANY OTHER BUSINESS

There was no other business declared.

Chair



Chorley Partnership Our Achievements So Far

Chorley Partnership Board

Presentation by
Chris Sinnott

3rd March 2011

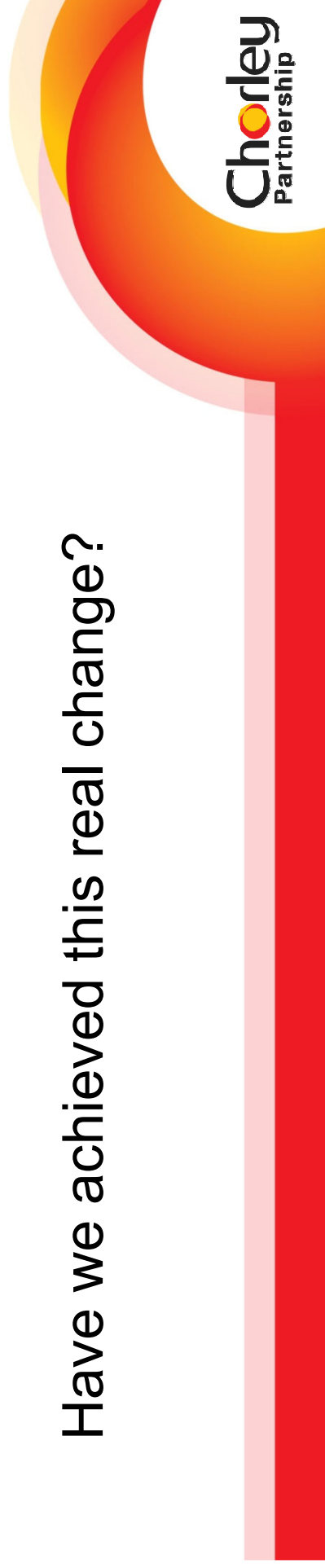


Back in 2007

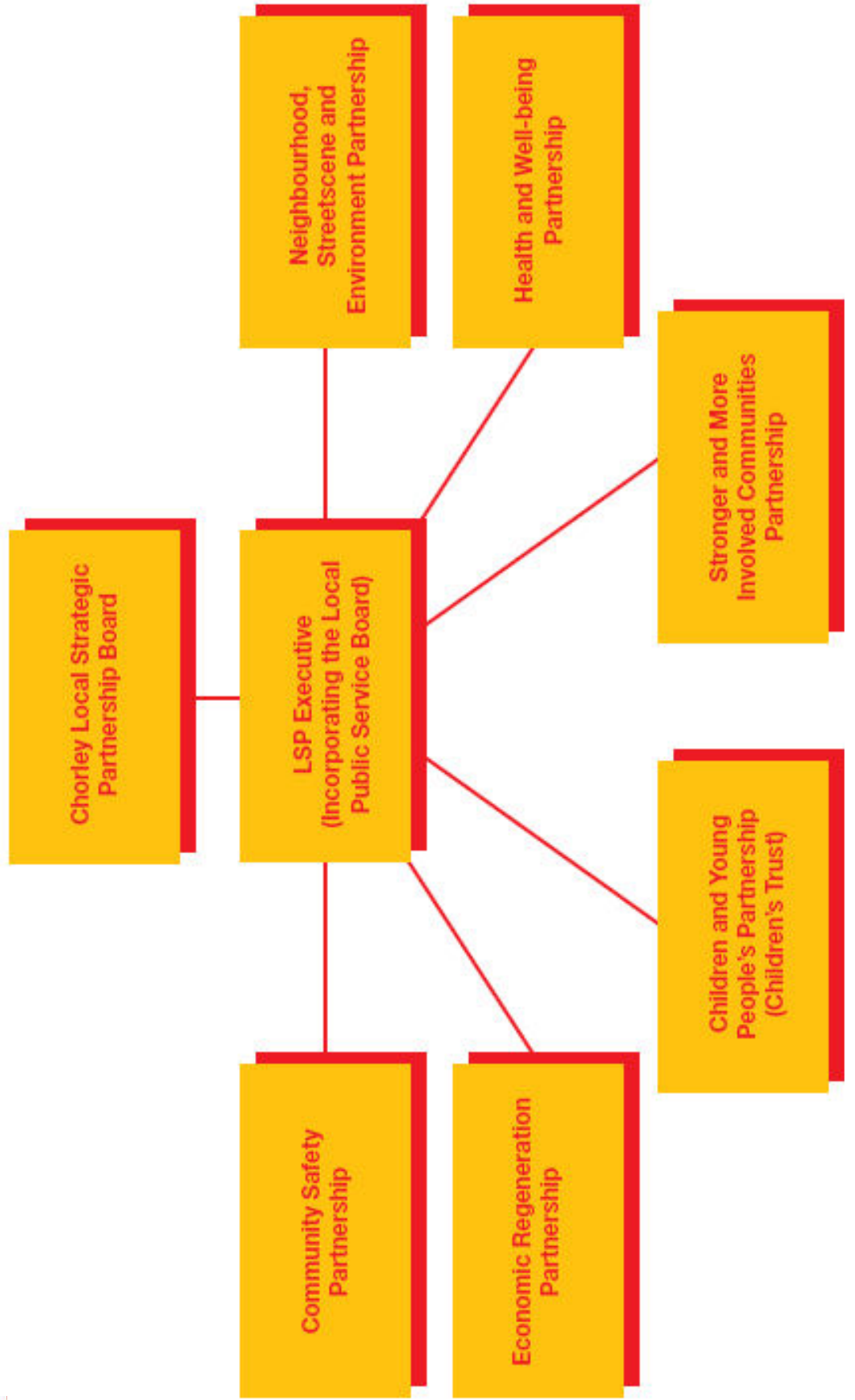
- The IDeA Peer Review stated that an assessment of the partnership;

“A sea change from a low base, going in the right direction, high ambitions and expectations, still early days but now poised to deliver real change”

Have we achieved this real change?



Chorley Partnership in 2007



2007/8

A year of change and improvement

- Refreshed the Sustainable Community Strategy
- Implemented structural changes
- New Local Area Agreement
- Implemented new process of Partnership Projects – now over 30 have been delivered

Partnership Projects

- Focus of thematic group delivery
- Over 30 projects in three years
- Attracted £000,000's of match funding
- Enabled delivery of the Sustainable Community Strategy and LAA



From 2007/8 – Families First



From 2008/9 – Girls Allowed



From 2009/2010 – Street Pastors



Performance

Annual Report 2009/10 Headlines;

- Unemployment has reduced
- Temporary accommodation is at an all time low
- House prices in Chorley have risen
- Crime is down overall by 2.1%
- Teenage pregnancy has fallen by 2.2%
- The number of young people 'neet' has reduced
- There have been 74 new business start ups
- Affordable homes has increased from 9 to 107
- The number of primary fires has reduced

Achievements of the Chorley Partnership

Our Approach – Key Factors

- Enthusiastic Committed Members
- Strong Focus on Outcomes
- Pooled/Mainstream Resources
- Robust Performance Management
- Willingness to Learn and Improve



Alcohol Intervention Programme

Chorley Partnership Board

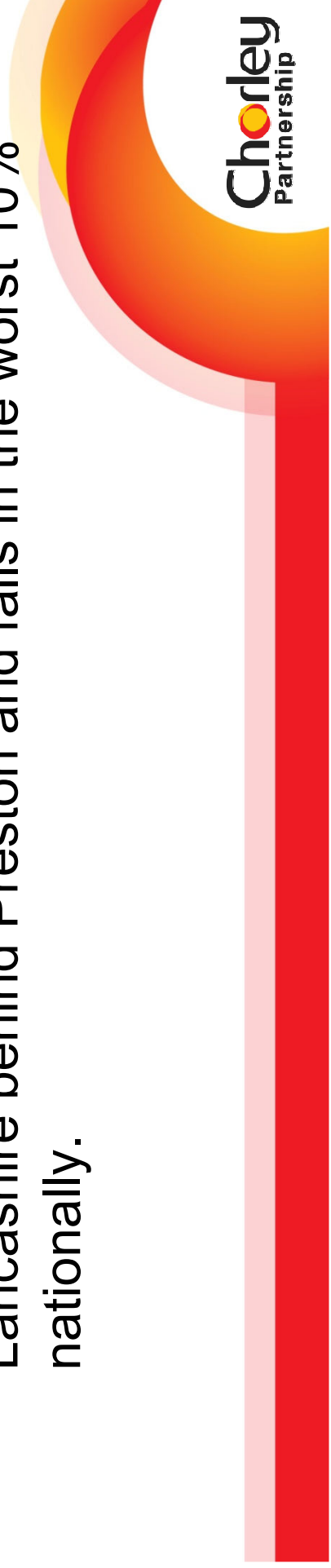
Presentation by
Sarah James and
Jenny Broom
3rd March 2011



Background

Alcohol related harm in Chorley – Key Facts;

- Increase over time - From 2002/3 to 2008/9 there has been an increase of 34% in the rate of alcohol related hospital admissions
- Comparison to other areas - In 2008/9, Chorley had the second worst rate of alcohol admissions in Lancashire behind Preston and falls in the worst 10% nationally.



Alcohol Intervention Programme

- On behalf of the LSP, a steering group incorporating Chorley Council, NHS Central Lancashire, Lancashire Teaching Hospitals and Lancashire County Council have developed the programme
- This includes a range of interventions, to assist different parts of the population – from general awareness to intensive support

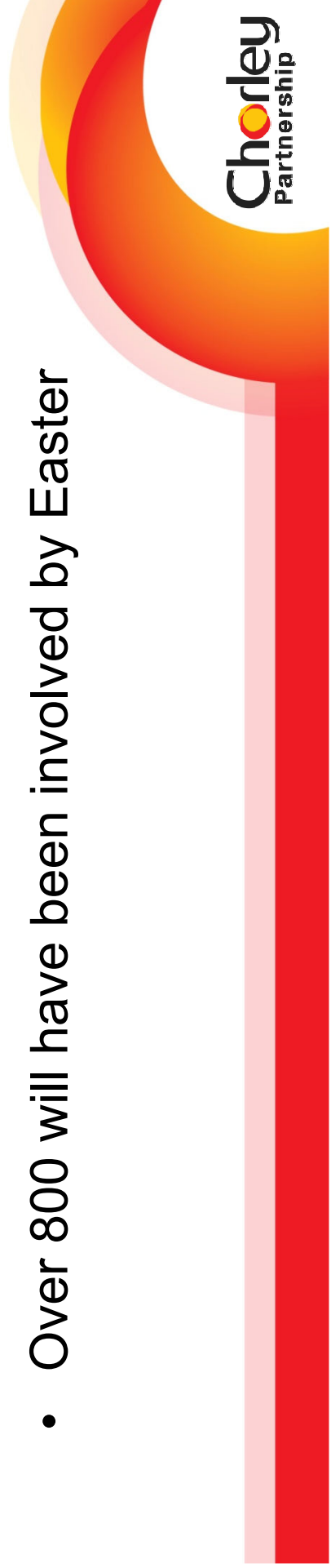


Healthy Shotz

***An alcohol awareness programme for high schools
that will develop young people's awareness of the
risks associated with alcohol consumption***

What has been achieved?

- 339 pupils involved to date
- Over 800 will have been involved by Easter



Smart Response

Targeted outreach work with young people and families based on local intelligence and need, delivered by specialist drug and alcohol youth workers

What has been achieved?

- 206 young people involved to date
- Work is ongoing to engage with parents and carers

Training for Staff

Provision of brief intervention training where participants gain an understanding of the different ways in which people use alcohol, and are given techniques to provide advice and support to customers

What has been achieved?

- 53 delegates attended 3 sessions from a range of partner organisations



Chorley One Stop Health Shop

Background

- Provision of health checks in the town centre – from the Chorley Smile trailer, to a kiosk on Market Street – now in semi permanent base on Cleveland Street
- Partnership Project by NHS Central Lancashire and Chorley Council





Benefits

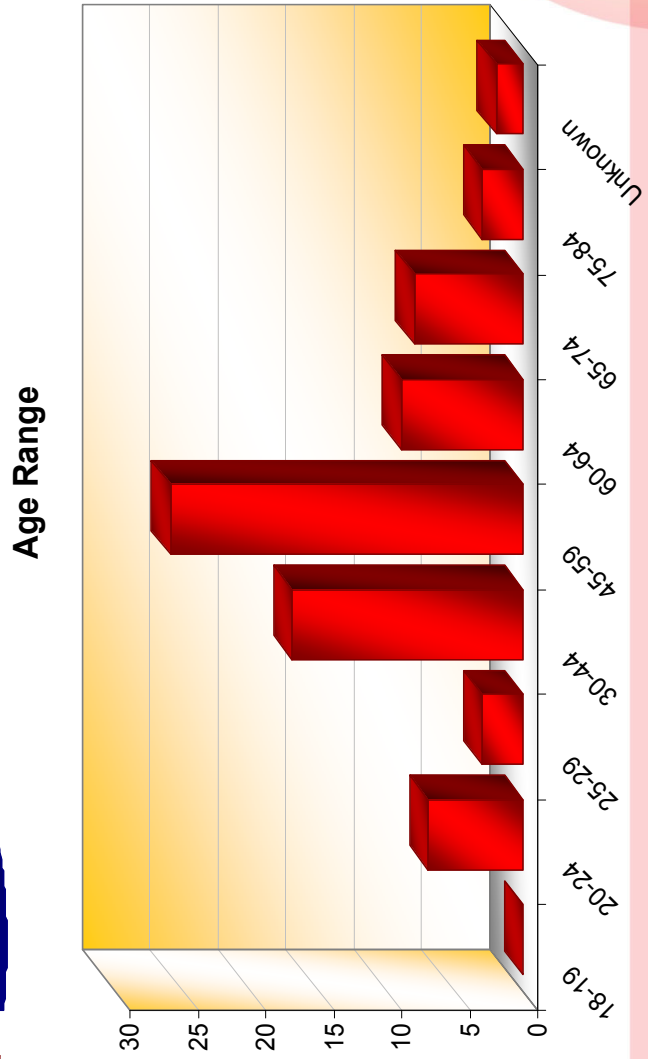
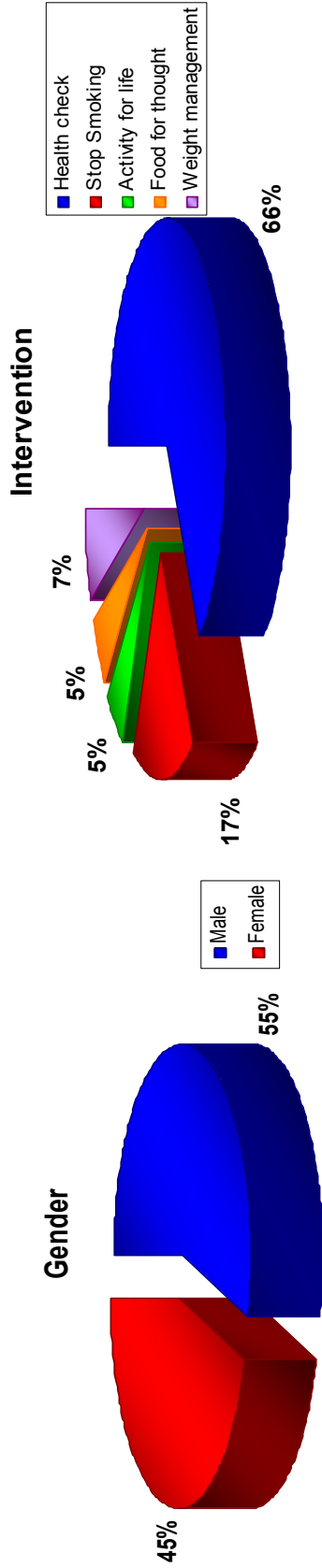
- Empowering clients
- Single point of access
- Target key areas of deprivation / health inequalities / hitting target market
- Flexibility
- Early screening – preventative
- Changing lifestyle behaviour
- Raise awareness of healthy lifestyle service
- Increase partnership working

Our Partners

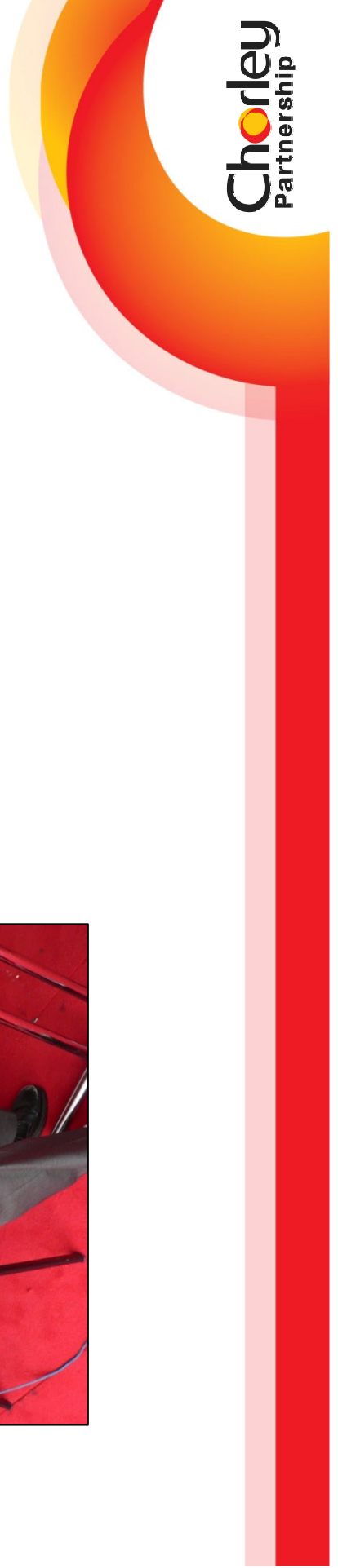
- Help Direct
- Citizens Advice Bureau
- Age Concern
- Home Start
- Hepatitis Team
- MIND (Mental Health Service)
- Chorley Women's Centre
- The Desmond Project (Diabetes)
- Lancashire College
- Sexual Health Team
- Lancashire Fire & Rescue
- Alcohol Services

One Stop Health Shop

(analysis of 75 service users from 18th – 31st January 2011)



Next Steps



Conclusion

2010/11 – A year of change and improvement

- Refreshed the Sustainable Community Strategy
- Developed structural changes
- Developed new process of Partnership Projects

We are now fit for purpose for the times ahead

This page is intentionally left blank



Chorley Partnership: Looking to the Future

Chorley Partnership Board

Presentation by
Sarah James and
Geraldine Moore

3rd March 2011



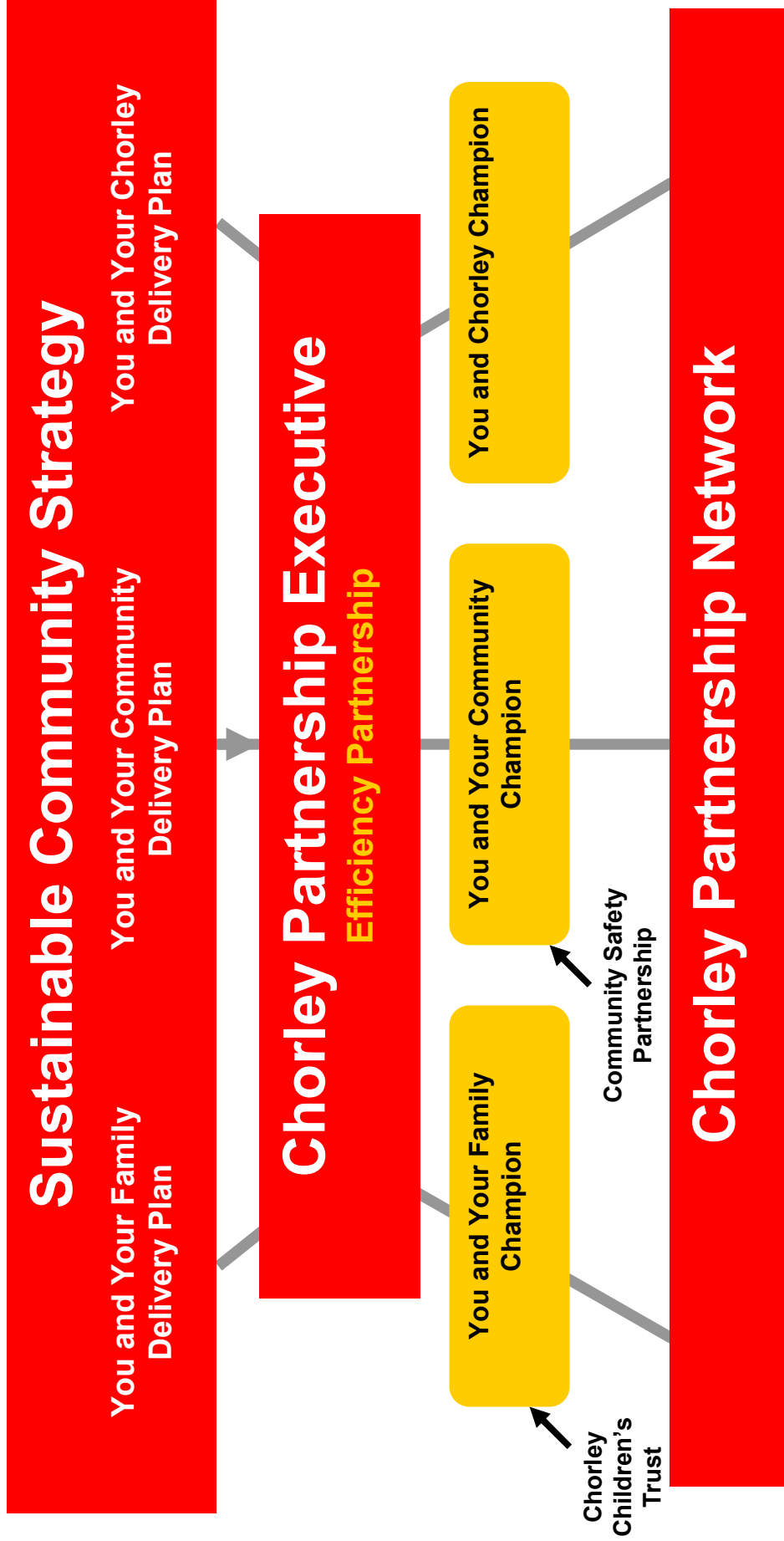
Overview

- Role of the Chorley Partnership
- New operating arrangements
- Delivery of our priorities
- Role and work of the new Executive
- Role of the Champions
- Role of the new Network
- Chorley Voluntary, Community and Faith Sector Forum

Role of the Chorley Partnership

1. To drive the delivery of the Sustainable Community Strategy, through a Delivery Plan that is owned and agreed by all partners.
2. To promote the improvement and joint-working of public services throughout Chorley to bring about efficiencies and improved services
3. To draw on the expertise of the public, private, voluntary, faith and community sectors to co-ordinate joint working in improving Chorley.
4. To monitor the overall progress of the Partnership and be publicly accountable

New Operating Arrangements



Delivery of our Priorities

- Priorities set through Sustainable Community Strategy
- Work has been ongoing to develop an annual delivery plan
- Commitments from main public sector bodies already included
- Further commitments welcomed
- Final approval by the Executive in April
- Performance managed by the Executive and wider Network



Role of the Executive

- To challenge performance and drive delivery of the Sustainable Community Strategy
- To drive the priority of ‘reducing public expenditure by working together’, by undertaking and efficiency and improvement projects
- To ensure that there is a partnership approach to creating efficiencies by having a ‘no surprises’ approach to funding cuts, to ensure they are assessed in terms of their impact on other functions, and announcements are shared at a partnership level.

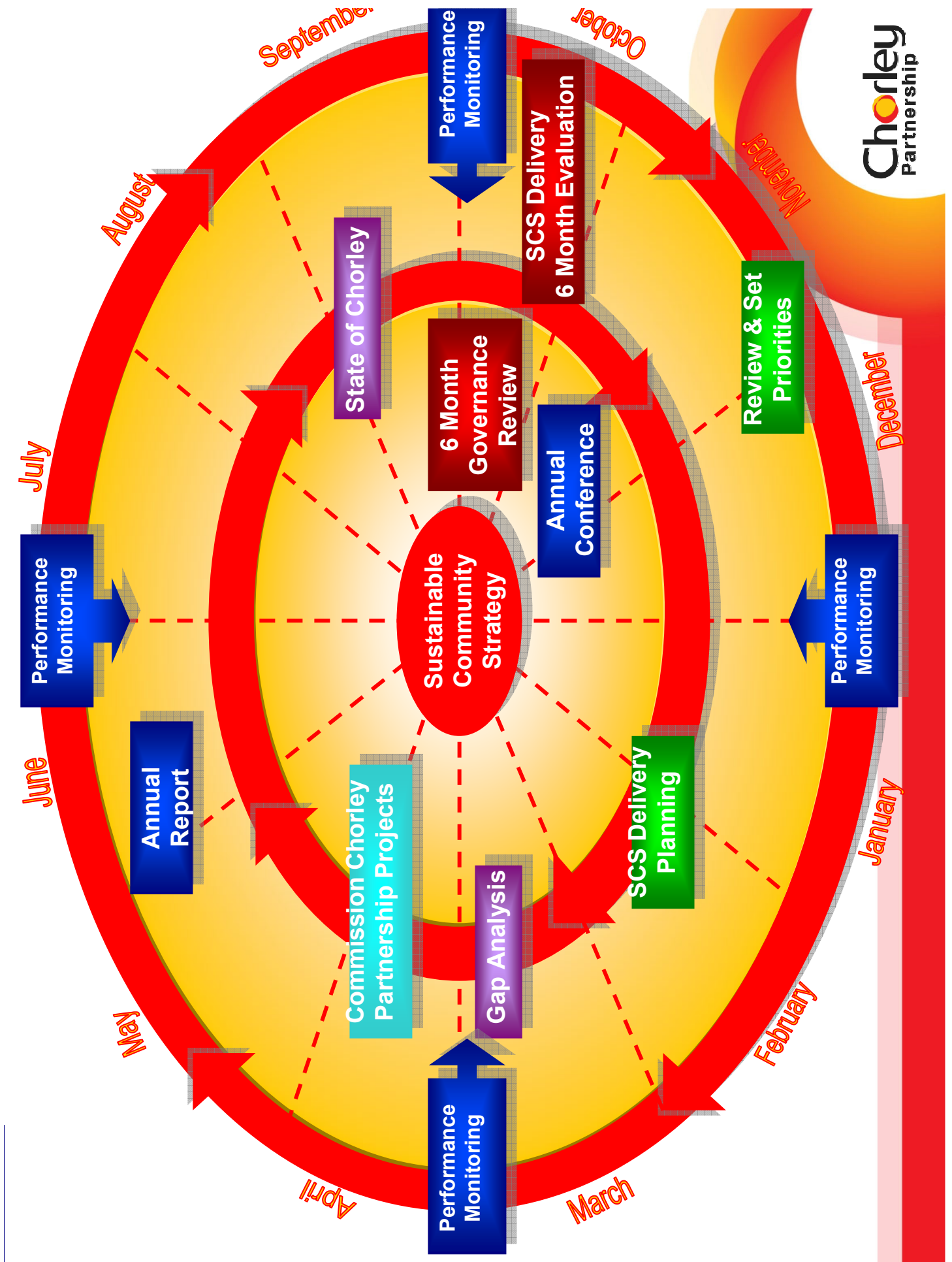
Work of the Executive for 2011/12

Delivery of Priorities

- Final approval of SCS Delivery Plan
- Development of robust performance management arrangements
- Commissioning of partnership projects

2 Key Projects

- Delivery of the Total Alcohol Project
- Reducing Public Expenditure by working together



Role of the Champions

The Champions will;

- *Be senior individuals, who will be co-opted by the Executive to represent the themes of the Sustainable Community Strategy*
- *Be co-opted annually, reviewed in the first meeting of the financial year.*
- *Receive support to enable them to fulfil the demands of the role.*

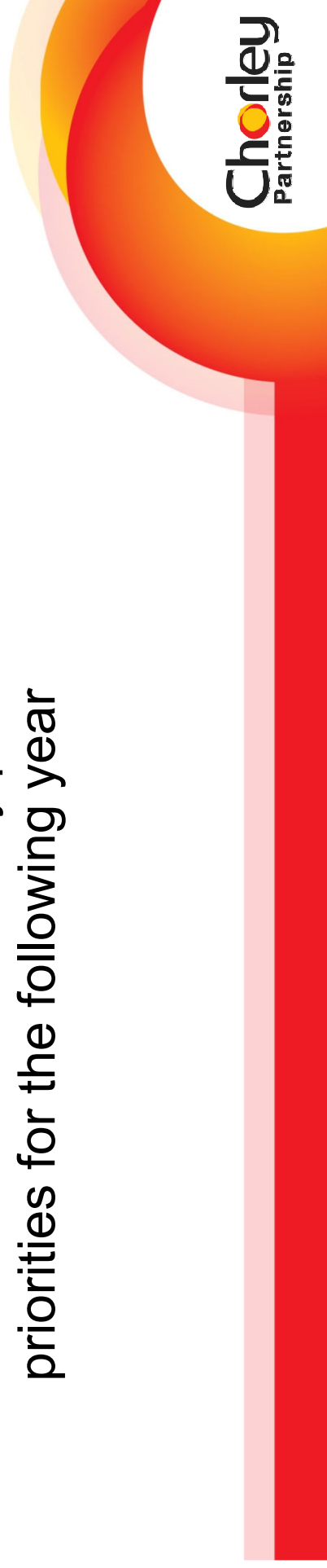
1. Provide leadership for their theme in the Partnership and in Chorley
2. Drive delivery of their theme to achieve the priorities within the Sustainable Community Strategy

How will the Network operate?

- Open to all to become members – through the community of practice

<http://www.communities.idea.gov.uk/welcome.do>

- Online forum, blogs, library, resources, calendar
- Annual Conference – to review performance and first six months of the delivery plan, and to look to set priorities for the following year



Engagement of the VCF Sector

- Development of the VCFS Network – contract awarded to a consortium group

Geraldine Moore



Chorley Voluntary, Community, and Faith Sector Forum

- A partnership bid
- Based on the added value gained from the SMIC
- Small planning group set up to prepare
- Initial meeting of this group planned for Friday 4th March

Chorley Voluntary, Community, and Faith Sector Forum

We will:

- build membership based on those in the Chorley Community Network
- identify the scope and input of the resources within the faith sector
- provide infrastructure/admin support collectively
 - using our combined skills!
- host two initial meetings for the sector – in April and June



Chorley Voluntary, Community, and Faith Sector Forum

We will:

- constitute the forum
- elect representatives to the Partnership
- improve stakeholder engagement
- assist in the delivery of the Chorley Community Strategy

Thank you for your support

- watch this space!

And Finally ... A Date for the Diary

Annual Chorley Partnership Conference

“Working Together to make Chorley Smile”

18th October 2011, Chorley Town Hall



This page is intentionally left blank